

Saffire LX-P & Saffire EVO LZ-P

Surface mount exit door preparation

NOTES:

1. USE DIMENSIONS FROM BACKSET TABLE TO ADJUST BACKSET POSITION ACCORDING TO LOW AND HIGH BEVEL DOOR EDGE.
2. DIMENSIONS ARE SYMMETRICAL ABOUT \bar{C} UNLESS OTHERWISE NOTED.
3. THESE HOLES CORRESPOND TO HOLE PATTERN OF SURFACE MOUNT EXIT DEVICES. FOR COMPLETE HOLE PATTERN REFER TO SPECIFIC MODEL DRILLING TEMPLATE.
4. GROOVE TO BE DONE ONLY IN SOLID DOORS. TO PASS WIRES INSIDE THE DOOR FOR HOLLOW DOORS.
5. REFER TO SPECIFIC TOLERANCES TABLE FOR DIMENSIONS MARKED WITH #.
6. DRAWING IS NOT TO SCALE.
7. DIMENSIONS ARE IN INCHES [mm].

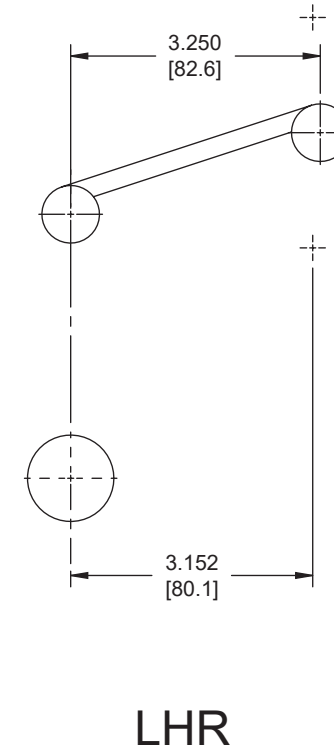
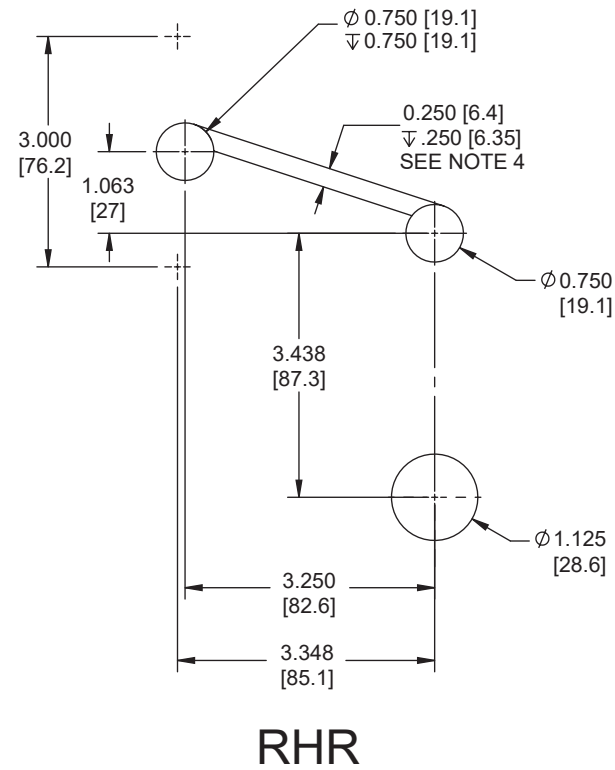
DIMENSIONS = IMPERIAL/IMPÉRIAL (MILLIMETER / MILLIMÈTRE)
 3D FILE GOVERNS ALL UNSPECIFIED DIMENSIONS & GENERAL TOLERANCES APPLY / LES DIMENSIONS NON SPÉCIFIÉES SONT DÉFINIES PAR LE FICHIER 3D ET LES TOLÉRANCES GÉNÉRALES S'APPLIQUENT
GENERAL TOLERANCE, UNLESS OTHERWISE SPECIFIED
 TOLÉRANCES GÉNÉRALES, SAUF SI SPÉCIFIÉ AUTREMENT

THREAD CLASS / FILET SAE: 2A-2B ISO: 6g / 6H FINISH / FINI ✓
 ANGLE: ± 1°
 CHAMFER / CHANFREIN: $\leq \pm 5^\circ$

BACKSET ADJUSTMENT FOR 3° BEVEL DOOR

DOOR THICKNESS DIMENSION X	BACKSET ADJUSTMENT DIMENSION Y
1.25" [31.8mm]	.032" [0.81mm]
1.50" [38.1mm]	.039" [1.00mm]
1.75" [44.5mm]	.046" [1.17mm]
2.00" [50.8mm]	.052" [1.32mm]
2.25" [57.2mm]	.059" [1.50mm]
2.50" [63.5mm]	.065" [1.65mm]
2.75" [69.9mm]	.072" [1.83mm]

SPECIFIC TOLERANCES	
DISTANCES	±.030 [0.75]
HOLES ϕ	±.010 [0.25]
DIMS MARKED #	+ .030 [0.75]
	- .000 [0.00]



WARNING

- To verify lock coverage and door operation meets expectations, dormakaba strongly recommends completing a full door mockup. This will ensure that all necessary products and parts for a successful installation are included.
- Always validate that you have selected the correct template for specific lock model being installed. The same lock model can be offered with different locking device options.
- Drawing is not to scale. Measurements are for reference only. Not a drilling template.
- If you have any questions, please contact your local sales representative or authorized reseller.